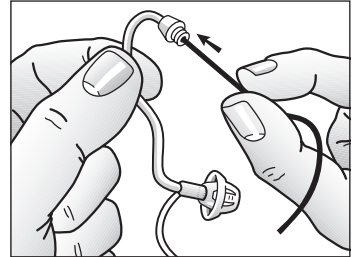


Thin tubes

Cleaning thin tubes and domes

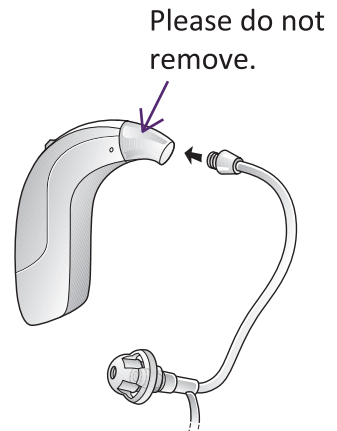
- 1 Remove the thin tubes from your hearing devices before cleaning by unscrewing them anti clockwise.
- 2 Wipe down the thin tubes and domes with a damp cloth.
- 3 In order to clear the thin tube of moisture and debris, push the black cleaning rod through the thin tube, beginning at the end opposite the dome.



i *Thin tube and dome systems should be replaced when the components become stiff, brittle or kinked.*

Replacing thin tubes

- 1 Remove thin tubes from hearing devices by unscrewing them anti clockwise.
- 2 Attach replacement thin tube by screwing clockwise.



Replacing domes

It is recommended that your hearing care professional change domes, as incorrect dome replacement could result in the dome falling out of the ear.

Audiologist contact details:

The right choice for the NHS

UK 02.09 D.9.2020

danalogic GN