

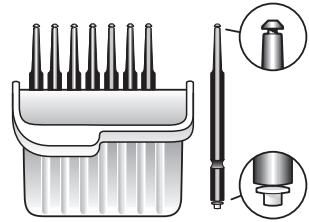
Changing Wax Guards

To replace wax filters on receivers follow these steps:

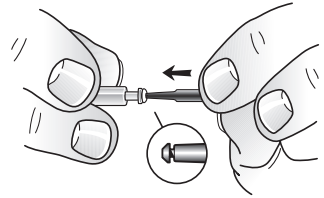
Carrying box with eight wax guard tools

The wax guard tool has two functions:

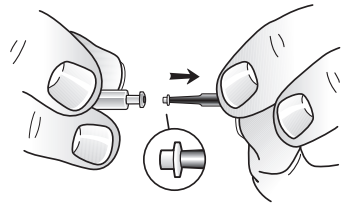
- A removal tip to collect the used filter
- A replacement tip with a white filter



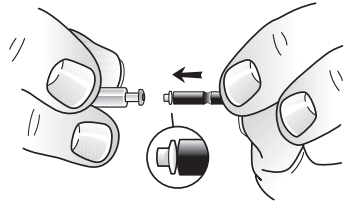
Insert the removal tip of the tool into the used wax guard so that the end of the tool touches the rim of the wax guard.



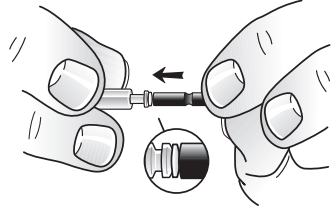
Slowly pull the wax guard straight out.



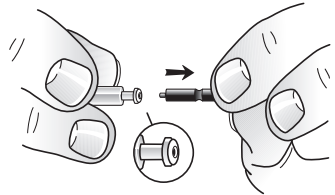
To insert the new wax filter, turn the tool around and follow these steps:



Insert the replacement tip of the tool into the hole where you removed the old guard.



Gently press the replacement tip straight into the hole until the outer ring lies flush with the sound outlet.



Pull the tool straight out- the new wax guard will remain in place.

NOTE: To ease removal and insertion, it may help to twist the wax guard tool.

Audiologist contact details: