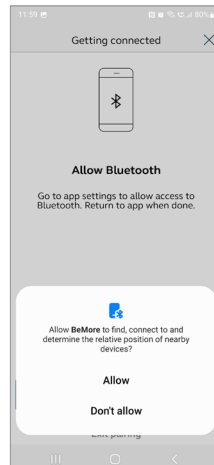
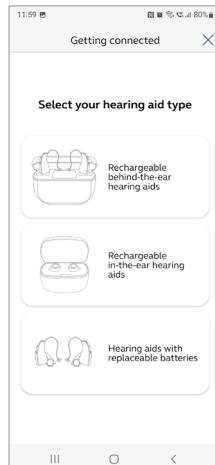
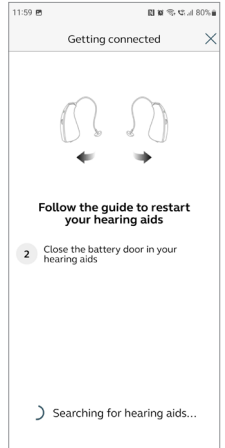
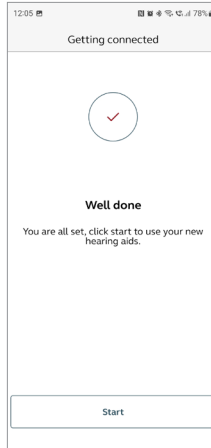
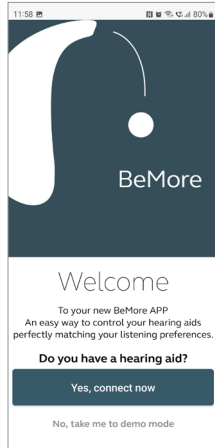
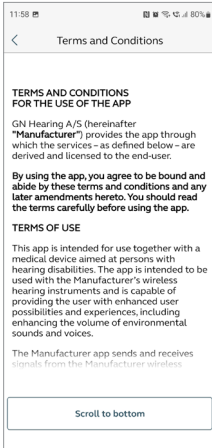


How to connect your danalogic Ambio hearing aids to the BeMore app on Android™ devices

1. Ensure your model of smart device is compatible by checking the following website: **[go.gn.com/app-support](https://www.gn.com/app-support)**.
2. Go to 'Settings' and ensure Bluetooth® is turned on.
3. Go to the Google Play store and search 'BeMore for your hearing aids'.
4. Tap 'Get' to start downloading the app. Once the app has downloaded open it.
5. Click on 'Yes connect now' and scroll down to accept the Terms and Conditions of the app.
6. On the 'Updates' screen press continue and then 'Allow/Don't Allow' depending on your preference.
7. On the Bluetooth screen click 'Allow' and then 'OK'.
8. Select your type of hearing aid and then follow the instructions on screen to connect your hearing aids.



How to connect your Ambio hearing aids to the BeMore app on Android devices (continued)



For further support, scan the QR code or visit our patient support portal at: danalogic.co.uk/patient-portal