

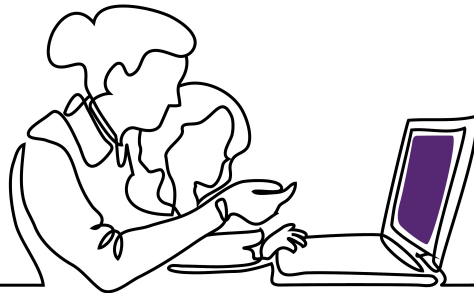
danalogic GN

Made for
iPhone | iPad | iPod

Works with
android

danalogic Ambio Smart User guide

Custom hearing aids



GN Making Life Sound Better

Hearing aid information

Left hearing aid		Right hearing aid	
Serial number		Serial number	
Model number		Model number	
Battery type	<input type="checkbox"/> CIC size 10A <input type="checkbox"/> ITC, ITE size 312 <input type="checkbox"/> ITE size 13		

Program	Beep	Description
1	One beep	
2	Two beeps	
3	Three beeps	
4	Four beeps	

Table of Contents

Introduction	5
Your hearing aid	6
How to get your hearing aid ready for use	8
How to place the hearing aids in your ears	12
How to remove the hearing aids from your ears	14
How to use your hearing aids	15
Advanced options	23
How to clean and maintain your hearing aids	30
Wireless accessories	34
Tinnitus Management	36
General warnings	47

Troubleshooting	50
Warnings to hearing care professionals (US only)	52
Regulatory information	55
Hearing aid variants	59
Additional information	61

Introduction

Thank you for choosing our hearing aids. We recommend that you use your hearing aids every day. This way you will fully benefit from them.

NOTE: Read this booklet carefully before you start using your hearing aids.

Intended use

Generic air-conduction hearing aids are wearable sound-amplifying devices intended to compensate for impaired hearing. The fundamental operating principle of hearing aids is to receive, amplify, and transfer sound to the eardrum of a hearing impaired person.

This hearing device is intended for use by users over 12 years of age.

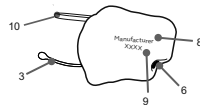
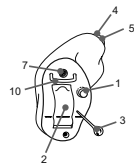
For devices including a Tinnitus Sound Generator module

The Tinnitus Sound Generator module is a tool to generate sounds to be used in a Tinnitus Management Program to temporarily relieve patients suffering from Tinnitus. The target population is primarily the adult population over 18 years of age. This product may also be used with children 12 years of age or older.

Your hearing aid

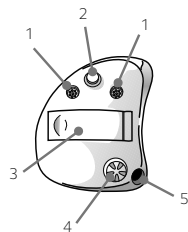
Your hearing aid – Completely-In-the-Canal (CIC)

1. Push button (optional)
2. Battery door and On/Off switch
3. Removal cord (optional)
4. Sound outlet
5. Wax filter
6. Vent
7. Microphone inlets
8. Manufacturer
9. Model designation and Serial number
10. Antenna



Your hearing aid – In-The-Canal (ITC)/In-The-Ear (ITE)

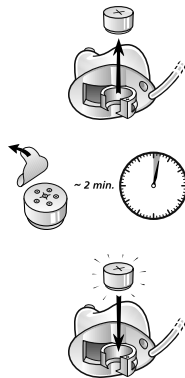
1. Microphone sound inlets
2. Push button (optional)
3. Battery door
4. Volume control (optional)
5. Vent



How to get your hearing aid ready for use

Replacing the battery

1. Open the battery door completely by using your fingernail. Remove the used battery if present.
2. Prepare the new battery. Remove the protective foil to activate the battery. Wait for 2 minutes before inserting the battery into the hearing aid.
3. Insert the new battery with the positive side in the correct position. Always insert the battery in the door: never directly into the hearing aid. Gently close the battery door.





NOTE: Always use new zinc-air batteries that have a minimum remaining shelf life of one year.

At night, turn off the hearing aids. Open the battery door completely to allow moisture to evaporate and prolong the hearing aids' lifespan.

If the hearing aids are experiencing frequent loss of connection to wireless accessories, contact your hearing care professional for a list of low impedance batteries.

Battery warnings



WARNING: Batteries contain dangerous substances and should be disposed of carefully in the interest of your safety and for the environment. Please note:

1. Keep batteries away from children, mentally disabled persons, and pets.
2. Do not place batteries in your mouth. Consult a physician immediately if a battery has been swallowed, as they can be harmful to your health.
3. Do not recharge zinc-air batteries – they may leak or explode.
4. Do not attempt to dispose of batteries by burning them.
5. Used batteries are harmful to the environment. Please dispose of them according to local regulations or return them to your hearing care professional.

6. Batteries may leak. Remove the battery if you leave the hearing aids unused for longer periods.
7. If the batteries are not inserted correctly, the device will not work and the batteries may build up heat. If this happens, please remove the batteries.



NOTE:



- Always use new zinc-air batteries that have a minimum remaining shelf life of one year.
- To save battery power, turn off your hearing aids when they are not in use.

Low battery warning

When the batteries are low on power, your hearing aids reduce the volume, and play a melody every 15 minutes until they are completely drained and turn off.

Low battery indicator when paired with wireless accessories (optional)

The batteries drain faster when you use wireless functionalities like direct streaming from your smartphone or streaming sound from your TV with our TV Streamer. When the batteries deplete, the support of some wireless accessories shut down. Full functionality returns when you insert a new battery. The table below shows how the functionality changes with the battery level.

Battery level	Signal	Hearing aid	Remote control	Streaming
Fully charged		✓	✓	✓
Low		✓	✓	x
Depleted (change battery)		✓	x	x

How to place the hearing aids in your ears

How to tell right from left

If you have two hearing aids, it is important that you can recognise one from the other.

Your **right** hearing aid will always have a **red** marking or shell, while your **left** hearing aid will have a **blue** marking or shell.

Insert hearing aids

Insert Completely-In-The-Canal (CIC), In-The-Canal (ITC), and In-The-Ear (ITE)

1. Hold the hearing aid between your thumb and index finger, either above and below or on the sides.
2. Place the sound outlet portion into your ear canal. Turn the top part of the hearing aid gently backwards and forwards so that it tucks behind the fold of skin above your ear canal.
3. Insert the hearing aid into your ear canal. Opening and closing your mouth may ease insertion.



By experimenting, you may discover an easier method. With proper insertion, hearing aids should fit snugly but comfortably.



NOTE: It may be helpful to pull your ear up and outward with your opposite hand during insertion.

How to remove the hearing aids from your ears

Remove Completely-In-Canal

1. Hold the removal cord with your thumb and index finger and pull outward.
2. Hold the edges of the hearing aid with your thumb and forefinger and pull outward while slightly rotating your hand forward.



Remove In-The-Canal (ITC) and In-The-Ear (ITE)

1. Hold the edges of the hearing aid with your thumb and forefinger.
2. Pull outward while slightly rotating your hand forward.



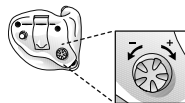
CAUTION: Never attempt to modify the shape of the hearing aid yourself.

How to use your hearing aids

Operation of the hearing aid

The volume control (if present) allows you to adjust the volume of your hearing aids to your liking.

1. To increase the volume, turn the volume control up (+).
2. To decrease the volume, turn the volume control down (-).



When you change the volume, the hearing aid responds with a beep. When you reach the upper or lower limits, the hearing aid responds with a low-pitch beep.



NOTE: If you have two hearing aids with the Synchronised Volume Control function enabled, volume control adjustments to one hearing aid automatically repeats in the second hearing aid. When you change volume on one of the hearing aids, it responds with one or more beeps. A beep in the second hearing aid follows.

If your hearing aids support wireless remote control, you may use the Remote Control 2 or the BeMore app to adjust e.g. the volume.

Push button (optional)

Your hearing aid has a push button allowing you to use up to four different listening programs. The list on page 2 tells which programs have been enabled.

1. Push the program button to switch between programs.
2. You will then hear one or more beeps. The number of beeps indicates which program you have selected (one beep = program one, two beeps = program two, etc.).
3. When you turn the hearing aids off and then back on, they always return to the default setting (program one and preset volume).



NOTE: If you have two hearing aids with the Synchronised Push Button enabled, program changes to one hearing aid automatically repeats in the second hearing aid. The same number of confirmation beeps will follow in the second hearing aid. This Synchronised Push Button can also be configured to allow one side to control volume increase and the other to control volume decrease. The volume changes to one hearing aid are repeated on the other side to keep levels the same.

Telecoil

(Optional for ITC-DW, ITE-DW models only)

Your hearing aid may have a telecoil. The Telecoil function may help to improve understanding of speech with Hearing Aid Compatible (HAC) telephones and in theatres, cinemas, houses of

worship, etc. that have a teleloop installed.

When you select the Telecoil program, your hearing aid picks up signals from the hearing loop or HAC telephone. Your hearing care professional can activate the Telecoil program.



NOTE: The telecoil cannot work without a hearing loop (aka induction-loop) or a HAC telephone.

NOTE: If you are having trouble hearing with the hearing loop, ask your hearing care professional to adjust the program.

NOTE: If there is no sound from the hearing aids in a hearing loop system and an active Telecoil program, the hearing loop system may not be turned on or is not operating correctly.

NOTE: The sound from the hearing loop and the hearing aids' microphones can be mixed to your preference. Ask your hearing care professional if this could be useful for you.

Teleloop systems

To use teleloop systems, follow these steps:

1. Switch your hearing aid to the telecoil program.

2. Find a good spot. Reception is not clear in all locations, it depends on the induction loop. Look for signs or find another spot .
3. If needed, adjust the volume.
4. When you leave, switch to program 1.

How to use the telecoil program

To use your telecoil program with hearing loop systems, follow these steps:

1. Switch your hearing aids to the Telecoil program.
2. Find a good spot. Reception is not clear in all locations, as it depends on the teleloop. Look for signals or find another spot.
3. If needed, adjust the volume.
4. When you leave, switch to your preferred program.

HAC telephone

Some smartphones are hearing aid compatible (HAC). The HAC phone establishes a small hearing loop that your hearing aids can connect to. The telecoil picks up the HAC phone's signal and converts it to sound.

To use a HAC phone, follow these steps:

1. Switch your hearing aid to the Telecoil program.
2. Pick up the phone and make a call or answer a call.
3. Hold the phone close to the hearing aid and tilt it slightly outwards.
4. Listen to the dial tone and move the telephone to get the best reception.
5. If needed, adjust the volume.
6. When you hang up, switch back to your preferred program.



NOTE:

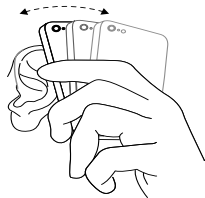
- If the phone has a poor telecoil signal, use the microphone program. To avoid whistling, do not hold the handset too tightly against your ear.
- Ask your hearing care professional to enable the Telecoil programme in your hearing aids.
- If you see a “M3”, “M4”, “T3”, or “T4” on the box, then the smartphone is HAC compliant. If you find it difficult to obtain a good result while using your smartphone, your hearing care professional will be able to give you advice on available wireless accessories to enhance listening capabilities. Ask your hearing care professional for advice regarding HAC smartphones.

Telephone use

Your hearing aid allows you to use your telephone as you normally do. Finding the optimal position for holding the phone may require practice.

The following suggestions may be helpful:

1. Dependent on your fitting and hearing status, either hold the telephone up to your ear canal or hold it close to the hearing aid microphones as illustrated
2. If whistling occurs, try holding the telephone in the same position for a few seconds as the hearing aid may be able to cancel the whistling



3. Holding the telephone slightly away from the ear can also stop any whistling



NOTE: Depending on your individual needs, your hearing care professional may activate a programme specifically for telephone use.

How to use your hearing aids with iPhone, iPad and iPod touch (optional)

Your hearing aids are Made for iPhone, iPad and iPod touch, which allow for direct audio streaming and control from these devices.

Streaming from an Android smartphone

Some Android smartphones can stream audio directly to your hearing aids. Your device must be running on Android 10 or newer and it needs to have the Android Streaming for Hearing Aids feature as well.



NOTE: For assistance with pairing and using these products with your hearing aids, contact your hearing care professional.

Mobile phones

Your hearing aid complies with the most stringent Standards of International Electromagnetic Compatibility. Any degree of disturbance can be due to the nature of your particular mobile phone or of your wireless telephone service provider.



NOTE: If you find it difficult to get a good result while using your mobile phone, your hearing care professional can give you advice on available wireless accessories to enhance listening capabilities.

Advanced options

Phone Now (optional)

By placing a magnet on the telephone receiver, your hearing aids automatically switch the telephone program on when the receiver is close to your ear. When you remove the receiver from your ear, the hearing aids automatically return to the previous listening program.

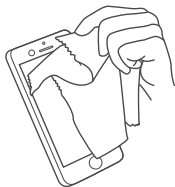


NOTE: Ask your hearing care professional to enable Phone Now as one of your programmes.

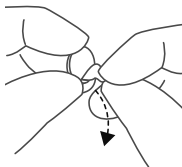
Place the Phone Now magnet

Place the magnet on your telephone receiver to allow operation of the Phone Now function. In order to place the magnet properly:

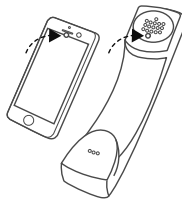
1. Clean the telephone thoroughly



2. Remove foil from magnet



3. Place the magnet



NOTE: If you are not satisfied with the strength of Phone Now, you can reposition the magnet or add additional magnets.

Prior to placing the magnet on the telephone or cell phone, use a recommended cleaning agent to clean the telephone.

How to use Phone Now

1. Lift the telephone to your ear.

2. When you hear a short melody, the phone program is active.



NOTE: You may need to move the telephone receiver slightly to find the best position for a reliable Phone Now activation and a good hearing experience on the telephone.

If your hearing aids have enabled the Comfort Phone functionality, the hearing aid on the non-phone ear automatically turns down the volume.

Ask your hearing care professional to enable Phone Now as one of your programmes.

Do not cover the loudspeaker opening with the magnet.

If the programme does not work to your satisfaction, moving the magnet to another position may improve ease of use and comfort while speaking.

If the hearing aids do not switch to the telephone programme every time, you can reposition the magnet or add additional magnets.

Use a recommended cleaning agent.



Phone Now warnings

- If a magnet is swallowed, seek immediate advice from a medical practitioner.
- Keep magnets out of reach of pets, children and mentally disabled persons.

- The magnet may affect some medical devices or electronic systems. The manufacturer of any magnetically sensitive devices (e.g. pacemakers) should advise you regarding appropriate safety precautions when using your hearing aid and magnet in close proximity to the medical device or electronic system in question. If the manufacturer cannot issue a statement, we recommend keeping the magnet or a telephone equipped with the magnet 30 cm (12”) away from magnetically sensitive devices (e.g. pacemakers).



Phone Now precautions

- If you experience frequent signal loss or noise during calls, move the magnet to another place on the telephone receiver.
- Only use original magnets supplied by the manufacturer.

Flight Mode (optional)

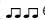
Your hearing aid allows you to control it from your smartphone or Remote Control. However, in some areas you are requested to turn off wireless communication.



CAUTION: When boarding a flight or entering an area where RF transmitters are prohibited, wireless functionality must be deactivated.

Follow these steps to turn off wireless mode:

1. For each hearing aid, open and close (open-close, open-close, open-close) the battery door three times within a 10-second period.

2. Double-dings for ten seconds ( etc.) indicate that your hearing aid is in Flight mode.



NOTE: Both hearing aids must be set in Flight mode - even with synchronisation enabled.

Follow these steps to activate wireless mode:

1. For each hearing aid, open and close the battery door once.
2. Your hearing aids are in wireless mode after 10 seconds.

It is important to wait an additional 15 seconds after wireless function resumes before opening and closing the battery compartment again for any reason. Flight mode will resume if you open and close the battery compartment during this 15 second window.

Using your hearing aid with smartphone apps (optional)

Our smartphone apps are intended to be used with our wireless hearing aids. The smartphone apps send and receive signals from the hearing aids via smartphones.

- Do not disable app notifications
- Install updates to keep the app working correctly
- Only use the app with hearing aids from the same manufacturer. We take no responsibility if the app is used with other hearing aids

- If you want a printed version of the smartphone app user guide, please go to our website or consult customer support



NOTE: For assistance with pairing and using these products with your hearing aids, please contact your hearing care professional or visit our support site.



NOTE: If your Bluetooth® enabled Android smartphone does not stream directly to your hearing aids, you are able to answer the telephone if you use Phone Clip+.

Online Services (optional)

If you have signed up to use Online Services available with your hearing aids, you can allow your hearing aids to be adjusted remotely without having to visit your hearing care professional.

All you need is a smart device with Internet enabled. This allows you to experience unprecedented freedom and flexibility:

1. Request assistance remotely to adjust your hearing aids to be a better fit for you.
2. Keep your hearing aids up to date with the latest software to ensure the best performance possible.



NOTE: Your hearing aids shut down during the install and update process.

For optimum performance, make sure the hearing aids are connected to the BeMore app and placed close to the iPhone, iPad, iPod touch or the Android™ smartphone before applying the changes.

This service only works if your smart device is connected to the Internet. Your hearing care professional will provide information regarding this option, and how it works with the BeMore app.



How to clean and maintain your hearing aids

Daily maintenance



NOTE: It is important to keep your hearing aid clean and dry. On a daily basis, clean the hearing aids using a soft cloth or tissue. In order to avoid damage due to humidity or excessive perspiration, the use of a drying kit is recommended.



NOTE: Do not use alcohol or any other solvents to clean your hearing aids - the protective coating will be damaged.

How to replace wax filters

Custom hearing aids may have wax filters that protect against wax and moisture. It is recommended that these are changed as needed.

Change HF3 wax filters

1. Brush the sound outlet area with the sound outlet pointed down.
2. Insert the threaded end of the wax filter tool into the used wax filter, and gently rotate clockwise.
3. Gently pull until the used filter is removed.

4. Discard the used filter in the slot located in the wax filter kit by pressing it into the centre, sliding it to one end of the slot, and pull until the filter is discarded.
5. Flip the wax filter tool around, locate a new filter in the dial, and press the tip of the tool into the centre of the dial.
6. Gently pull the new filter out of the dial.
7. Align the new filter to the sound outlet.
8. Press the new filter into the opening, and simultaneously pull and rock back and forth until the new wax filter is in place.

Change wax filters

1. To remove the old wax guard, insert the removal side of the wax guard tool into the used wax guard so that the shaft of the tool is touching the rim of the wax guard. Slowly pull the wax guard straight out.
2. To insert the new wax guard, gently press the replacement side of the wax guard tool straight into the hole of the sound outlet until the outer ring lies flush with the outside of the receiver. Pull the tool straight out - the new wax guard will remain in place.



NOTE: Pressing on the new filter with the flat side of the wax filter tool can ensure that the filter is correctly in place.

If a different type of wax filter is used for your hearing aids, or if your hearing aids do not use wax filters, consult your hearing care professional for guidance.



CAUTION: Use only original consumables from the manufacturer e.g. wax filters.

Care and maintenance

Please follow the advice below to have the best user experience and to prolong the life of your hearing aids.

1. Keep your hearing aids dry and clean.
2. Open the battery door to dry your hearing aids when you are not wearing them.
3. Wipe the hearing aids with a soft cloth after use to remove grease or moisture.
4. Do not wear your hearing aids when putting on cosmetics, perfume, aftershave, hairspray, suntan lotion, etc. These might discolour the hearing aid or get into the hearing aid causing damage.
5. Do not immerse your hearing aid in any liquid.

6. Keep your hearing aids away from excessive heat and direct sunlight. The heat may deform the shell, damage the electronics and deteriorate the surface.
7. Do not swim, shower or steam bathe while wearing your hearing aids.

Wireless accessories

The wireless eco-system features a comprehensive range of seamlessly integrated wireless accessories. This allows you to control and stream high quality stereo sound and speech directly to your hearing aids.

Please find the list of available wireless accessories below:

- **TV Streamer 2** allows you to stream the audio from TV sets and virtually any other audio source to your hearing aids at a volume level that suits you.
- **Remote Control** allows you to adjust the volume, mute your hearing aids and change programs.
- **Remote Control 2** allows you to adjust the volume or mute your hearing aids, change programs, and see settings at a glance on its display.
- **Phone Clip+** streams phone conversations and stereo sound directly to both hearing aids, and it doubles as a simple remote control.
- **Micro Mic** is a body worn microphone for your friend or colleague. It significantly improves speech understanding in noisy situations.

- **Multi Mic** works like the **Micro Mic** but doubles as a table microphone, connects with loop and FM systems , and has a mini-jack input for streaming audio from a computer or music player.



NOTE:

- Ask your hearing care professional for more information on the range of our wireless accessories.
- For use of wireless functionality, only use supported wireless accessories. For further guidance regarding e.g. pairing, please refer to the user guide of the relevant wireless accessory.

Tinnitus Management

Tinnitus Sound Generator module

Your hearing aid includes the Tinnitus Sound Generator (TSG) module. The Tinnitus Sound Generator (TSG) Module is a tool that generates sounds to be used in tinnitus management programmes to temporarily relieve suffering from tinnitus. The TSG can generate sounds adjusted to your personal preference and your specific therapeutic needs as determined by your doctor, audiologist or hearing care professional. Depending on the selected hearing aid program and the environment you are in, you will sometimes hear the therapeutic sound resembling a continuous or fluctuating noise.

Indications for use of the TSG module - (US only)

The Tinnitus Sound Generator module is a tool to generate sounds to be used in a Tinnitus Management Program to temporarily relieve patients suffering from Tinnitus. The target population is primarily the adult population over 18 years of age. This product may also be used with children 5 years of age or older.

The Tinnitus Sound Generator Module is targeted for healthcare professionals, which are treating patients suffering from Tinnitus, as well as conventional hearing disorders. The fitting of the Tinnitus Sound Generator Module must be done by a hearing professional participating in a Tinnitus Management Program.

User instructions for the TSG module

Description of the device

The Tinnitus Sound Generator (TSG) Module is a software tool that generates sounds to be used in tinnitus management programs to temporarily relieve suffering from tinnitus.

Explanation of how the device works

The TSG module is a frequency and amplitude shaped white-noise generator. Noise signal level and frequency characteristics can be adjusted to the specific therapeutic needs as determined by your doctor, audiologist or hearing care professional.

Your doctor, audiologist or hearing care professional can modulate the generated noise with the purpose of making it more pleasant. The noise can then resemble, for example, breaking waves on a shore.

Modulation level and speed can also be configured to your likes and needs. An additional feature can be enabled by your hearing care professional that allows you to select predefined sounds that simulate sounds from nature, such as breaking waves or running water.

If you have two wireless hearing aids that support ear-to-ear synchronisation, this functionality can be enabled by your hearing care professional. This will cause the Tinnitus Sound Generator to synchronise the sound in both hearing aids.

If your tinnitus troubles you only in quiet environments, your doctor, audiologist or hearing care professional can set the TSG Module so that it becomes audible exclusively in such surroundings. The overall sound level can be adjusted via a volume control. Your doctor, audiologist or hearing care professional will review with you the need for having such a control.

For hearing aids where ear-to-ear synchronization is enabled, your hearing care professional can also enable environmental monitoring synchronization so that the TSG noise level is automatically adjusted simultaneously in both hearing aids dependent on the background sound level. Additionally, since the hearing aid has a volume control, the background noise level monitored by the hearing aid and the volume control can be used simultaneously to adjust the generated noise level in both hearing aids.

The scientific concepts that form the basis for the device

The TSG module provides sound enrichment with the aim of surrounding the tinnitus sound with a neutral sound which is easily ignored. Sound enrichment is an important component of most approaches to tinnitus management, such as Tinnitus Retraining Therapy (TRT).

To assist habituation to tinnitus, this needs to be audible. The ideal level of the TSG module, therefore, should be set so that it starts to blend with the tinnitus, and so that you can hear both your tinnitus as well as the sound used.

In a majority of instances, the TSG module can also be set to mask the tinnitus sound, so to provide temporary relief by introducing a more pleasant and controllable sound source.

TSG volume control

The sound generator is set to a specific loudness level by the hearing care professional. When switching the sound generator on, the volume will have this optimal setting. Therefore, it might not be necessary to control the volume (loudness) manually. However, the volume control provides the ability to adjust the volume, or amount of stimulus, to the liking of the user. The tinnitus sound generator volume can only be adjusted within the range set by the hearing care professional.

The volume control is an optional feature in the TSG module used for adjusting the sound generator output level.

Using TSG with smartphone apps

The tinnitus sound generator control via hearing aid push buttons can be enhanced with wireless control from a TSG control app on a smartphone or mobile device. This functionality is available in supported hearing aids when a hearing care professional has enabled the TSG functionality during fitting of the hearing aid.



NOTE: To use smartphone apps, the hearing aid must be connected with the smartphone or mobile device.

TSG - Technical specifications

Audio signal technology: Digital.

Available sounds

White noise signal which can be shaped with the following configurations:

High-pass filter	Low-pass filter
500 Hz	2000 Hz
750 Hz	3000 Hz
1000 Hz	4000 Hz
1500 Hz	5000 Hz
2000 Hz	6000 Hz
-	8000 Hz

The white noise signal can be modulated in amplitude with an attenuation depth of up to 14 dB.



Prescription use of a Tinnitus Sound Generator hearing aid

The TSG should be used as prescribed by your doctor, audiologist or hearing healthcare professional. In order to avoid permanent hearing damages, the maximum daily usage depends on the level of the generated sound.

To adjust TSG, please consult your hearing care professional.

Should you develop any side effects from using the sound generator, such as dizziness, nausea, headaches, perceived decrease in auditory function or increase in tinnitus perception, you should discontinue use of sound generator and seek medical evaluation.

Children and physically or mentally challenged users will require training by a doctor, audiologist, hearing care professional or the guardian for the insertion and removal of the hearing aid containing the TSG module.

Important notice for prospective sound generator users

A tinnitus masker is an electronic device intended to generate noise of sufficient intensity and bandwidth to mask internal noises. It is also used as an aid in hearing external noises and speech.

Good health practice requires that a person with a tinnitus condition have a medical evaluation by a licensed physician (preferably a physician who specializes in diseases of the ear) before using a sound generator. Licensed physicians who specialize in diseases of the ear are often referred to as otolaryngologists, otologists or otorhinolaryngologists.

The purpose of medical evaluation is to assure that all medically treatable conditions that may affect tinnitus are identified and treated before the sound generator instrument is used.

The sound generator instrument is a tool to generate sounds to be used with appropriate counselling and/or in a tinnitus management programme to relieve patients suffering from tinnitus.



Tinnitus Sound Generator warnings

1. Sound generators should be used only as advised by your doctor, audiologist, or hearing care professional.
2. Sound generators are not toys and should be kept out of reach of anyone who might cause themselves injury (especially children and pets).
3. Sound generators can be dangerous if improperly used.



Tinnitus Sound Generator precautions

1. Should the user develop any side effects from using the sound generator, such as dizziness, nausea, headaches, perceived decrease in auditory function or increase in tinnitus perception, the user should discontinue use of the sound generator and seek medical evaluation.
2. Discontinue use of the sound generator and consult promptly with a licensed physician if you experience one of the following conditions:
 - a. Visible congenital or traumatic deformity of the ear.
 - b. History of active drainage from the ear within the previous 90 days.
 - c. History of sudden or rapidly progressive hearing loss within the previous 90 days.
 - d. Acute or chronic dizziness.
 - e. Unilateral hearing loss of sudden or recent onset within the previous 90 days.
 - f. Visible evidence of significant cerumen accumulation or a foreign body in the ear canal.
 - g. Pain or discomfort in the ear.

3. Discontinue use of the sound generator and consult promptly with your hearing care professional, if you experience changes in the tinnitus perception, discomfort or interrupted speech perception, while using the Tinnitus Sound Generator.
4. The volume control is a feature in the TSG module used for adjusting the sound generator output level. To prevent unintended usage by paediatric or physically or mentally disabled users, the volume control must be configured to only provide a decrease of the sound generator output level.
5. Children and physically or mentally disabled users will require guardian supervision while wearing the TSG hearing aid.
6. Adjustment of the Tinnitus Sound Generator settings, using a smartphone app, should only be performed by the parent or legal guardian in cases where the user is minor. Use of the Online Services for remote settings of the tinnitus sound generator, should only be performed by the parent or legal guardian in cases where the user is minor.



Tinnitus Sound Generator warning to hearing care professionals

A hearing care professional should advise a prospective sound generator user to consult promptly with a licensed physician (preferably an ear specialist) before getting a sound generator.

If the hearing care professional determines through inquiry, actual observation, or review of any other available information concerning the prospective user that the prospective user has any of the following conditions:

1. Visible, congenital or traumatic deformity of the ear.
2. History of active drainage from the ear within the previous 90 days.
3. History of sudden or rapidly progressive hearing loss within the previous 90 days.
4. Acute or chronic dizziness.
5. Unilateral hearing loss of sudden or recent onset within the previous 90 days.
6. Audiometric air-bone gap equal to or greater than 15 dB at 500 Hertz (Hz), 1,000 Hz, and 2,000 Hz.
7. Visible evidence of significant cerumen accumulation or a foreign body in the ear canal.
8. Pain or discomfort in the ear.



CAUTION: The maximum output of the sound generator falls into the range that can cause hearing loss according to OSHA regulations. In accordance with NIOSH recommendations, the user should not use the sound generator for more than eight (8) hours a day when this is set to a level of 85 dB SPL or above. When the sound generator is set to levels of 90 dB SPL or above the user should not use the sound generator for more than two (2) hours per day. In no case should the sound generator be worn at uncomfortable levels.

General warnings

1. Consult a hearing care professional if you think there may be a foreign object in your ear canal, if you experience skin irritation, or if excessive earwax accumulates with the use of the hearing aid
2. Different types of radiation, from e.g. NMR, MRI, or CT scanners, may damage hearing aids. It is recommended not to wear hearing aids during these or other similar procedures. Other types of radiation, such as burglar alarms, room surveillance systems, radio equipment, mobile telephones, contain less energy and will not damage hearing aids. However, they have the potential to momentarily affect the sound quality or temporarily create undesired sounds from the hearing aids
3. Do not wear hearing aids in mines, oil fields, or other explosive areas unless those areas are certified for hearing aid use
4. Do not allow others to use your hearing aids
5. Hearing aid usage by children or mentally disabled persons should be supervised at all times to ensure their safety. The hearing aid contains small parts that could be swallowed by children. Please be mindful not to leave children unsupervised with this hearing aid
6. Hearing aids should be used only as prescribed by your hearing care professional. Incorrect use may result in sudden and permanent hearing loss

7. Warning to hearing care professionals: Special care should be exercised in selecting and fitting hearing aids with maximum sound pressure level that exceeds 132dB SPL with an IEC 60711:1981 occluded ear simulator. There may be a risk of impairment of the remaining hearing
8. Turn off your wireless functionality by using the flight mode in areas where radio frequency emission is prohibited
9. If a hearing aid is broken, do not use it
10. External devices connected to the electrical input must be safe according to the requirements of IEC 60601-1, IEC 60065, EN/IEC 62368-1, or IEC 60950-1, as appropriate (wired connection, for example HI-PRO, SpeedLink).



NOTE: For use of wireless functionality, only use supported wireless accessories. For further guidance regarding e.g. pairing, please refer to the user guide of the relevant wireless accessory.



General precautions

1. When wireless function is activated, the device uses low-powered digitally coded transmissions in order to communicate with other wireless devices. Although unlikely, nearby electronic devices may be affected. In that case, move the hearing aid away from the affected electronic device
2. Use only original parts from the manufacturer, e.g. wax guards.

3. Only connect your hearing aids to accessories intended and qualified to be used with your hearing aids.

Hearing aid expectations

- A hearing aid will not restore normal hearing and will not prevent or improve a hearing impairment resulting from organic conditions.
- Consistent use of the hearing aid is recommended. In most cases, infrequent use does not permit you to get full benefit from it.
- The use of a hearing aid is only part of hearing rehabilitation and may need to be supplemented by auditory training and instructions in lip-reading.

Troubleshooting

Troubleshooting

Issue	Potential cause	Potential solution
Feedback, "whistling"	Is the volume very loud?	Reduce it.
	Are you holding an object (e.g. a hat, a telephone receiver) close to the hearing aid?	Move your hand away to create more space between the hearing aid and the object.
	Is your ear full of wax?	Visit your physician.
No sound	Is the hearing aid turned on?	Switch it on.
	Is there a battery in the hearing aid?	Insert a new battery.
	Is the battery still good?	Replace with a new one.
	Is your ear full of wax?	Visit your physician.
Sound is distorted or weak?	The battery is dead	Replace it with a new one.
	Is the battery dirty?	Clean it or replace it with a new one.
	Did your hearing aid get moist?	Use a desiccant (drying kit).

Issue	Potential cause	Potential solution
Battery drains very quickly	Did you leave your hearing aid switched on for longer periods of time?	Always switch off your hearing aid when you are not using them, e.g. during the night.
	Is the battery old?	Check the date on the battery pack.

Warnings to hearing care professionals (US only)

A hearing care professional should advise a prospective hearing aid user to consult promptly with a licensed physician (preferably an ear specialist) before dispensing a hearing aid if the hearing care professional determines through inquiry, actual observation, or review of any other available information concerning the prospective user, that the prospective user has any of the following conditions:

1. Visible congenital or traumatic deformity of the ear.
2. History of active drainage from the ear within the previous 90 days.
3. History of sudden or rapidly progressive hearing loss within the previous 90 days.
4. Acute or chronic dizziness.
5. Unilateral hearing loss of sudden or recent onset within the previous 90 days.
6. Audiometric air-bone gap equal to or greater than 15 decibels at 500 Hertz (Hz), 1,000 Hz, and 2,000 Hz.
7. Visible evidence of significant cerumen accumulation or a foreign body in the ear canal.
8. Pain or discomfort in the ear.



Important notice for prospective hearing aid users (US only)

Good health practice requires that a person with a hearing loss have a medical evaluation by a licensed physician (preferably a physician who specializes in diseases of the ear) before purchasing a hearing aid. Licensed physicians who specialize in diseases of the ear are often referred to as otolaryngologists, otologists or otorhinolaryngologists. The purpose of medical evaluation is to assure that all medically treatable conditions that may affect hearing are identified and treated before the hearing aid is purchased.

Following the medical evaluation, the physician will give you a written statement that states that your hearing loss has been medically evaluated and that you may be considered a candidate for a hearing aid. The physician will refer you to an audiologist or a hearing care professional, as appropriate, for a hearing aid evaluation.

The audiologist or hearing care professional will conduct a hearing aid evaluation to assess your ability to hear with and without a hearing aid. The hearing aid evaluation will enable the audiologist or hearing care professional to select and fit a hearing aid to your individual needs.

If you have reservations about your ability to adapt to amplification, you should inquire about the availability of a trial-rental or purchase-option program. Many hearing care professionals now offer programs that permit you to wear a hearing aid for a period of time for a nominal fee after which you may decide if you want to purchase the hearing aid.

Federal law restricts the sale of hearing aids to those individuals who have obtained a medical evaluation from a licensed physician. Federal law permits a fully informed adult to sign a waiver statement declining the medical evaluation for religious or personal beliefs that preclude consultation with a physician. The exercise of such a waiver is not in your best health interest and its use is strongly discouraged.



Children with hearing loss (US only)

In addition to seeing a physician for a medical evaluation, a child with a hearing loss should be directed to an audiologist for evaluation and rehabilitation because hearing loss may cause problems in language development and the educational and social growth of a child. An audiologist is qualified by training and experience to assist in the evaluation and rehabilitation of a child with hearing loss.

Regulatory information

Warranties and repairs

The manufacturer provides a warranty on hearing aids in the event of defects in workmanship or materials, as described in applicable warranty documentation. In its service policy, the manufacturer pledges to secure functionality at least equivalent to the original hearing aid. As a signatory to the United Nations Global Compact initiative, the manufacturer is committed to doing this in line with environment-friendly best practices. Hearing aids therefore, at the manufacturer's discretion, may be replaced by new products or products manufactured from new or serviceable used parts, or repaired using new or refurbished replacement parts. The warranty period of hearing aids is designated on your warranty card, which is provided by your hearing care professional.

For hearing aids that require service, please contact your hearing care professional for assistance.

Hearing aids that malfunction must be repaired by a qualified technician. Do not attempt to open the case of hearing aids, as this will invalidate the warranty.

Temperature test, transport and storage information

Our hearing aids are subjected to various tests in temperature and damp heating cycling between -25 °C (-13 °F) and +70 °C (+158 °F) according to internal and industry standards.

During normal operation the temperature should not exceed the limit values of 0 °C (+32 °F) to +40° C (+104 °F), at a relative humidity of 90% , non-condensing. An atmospheric pressure between 500 hPa and 1100 hPa is appropriate.

During transport or storage, the temperature should not exceed the limit values of -20 °C (-4 °F) to +60° C (+140 °F) at a relative humidity of 90% RH, non-condensing (for a limited time).

Statement

This device complies with part 15 of the FCC rules and ISED rules. Operation is subject to the following two conditions:

1. This device may not cause harmful interference.
2. This device must accept any interference received, including interference that may cause undesired operation.



NOTE: This equipment has been tested and found to comply with the limits for a Class B digital device, pursuant to part 15 of the FCC rules and ISED rules. These limits are designed to provide reasonable protection against harmful interference in a residential installation. This equipment generates, uses and can radiate radio frequency energy and, if not installed and used in accordance with the instructions, may cause harmful interference to radio communications.

However, there is no guarantee that interference will not occur in a particular installation. If this equipment does cause harmful interference to radio or television reception, which can be determined by turning the equipment off and on, the user is encouraged to try to correct the interference by one or more of the following measures:

- Reorient or relocate the receiving antenna
- Increase the separation between the equipment and the receiver

- Connect the equipment to an outlet on a circuit different from the one to which the receiver is connected
- Consult the dealer or an experienced radio/TV technician for help.

Changes or modifications can void the user's authority to operate the equipment.

Symbols



WARNING: Points out a situation that could lead to serious injuries.



CAUTION: Indicates a situation that could lead to minor and moderate injuries.



Advice and tips on how to handle your hearing aid better.



Equipment includes an RF transmitter.



Follow instructions for use.



Please ask your local hearing care professional concerning disposal of your hearing aid.

NOTE: Country-specific regulations may apply.

Hearing aid variants

Completely-in-the-canal (CIC) hearing aids (including type CSX10 with FCC ID X26CSX10, IC number 6941C-CSX10 models) with size 10A battery, are available in the following variants:

AM7CIC-W-HP
AM7CIC-W-LP
AM7CIC-W-MP
AM7CIC-W-UP

In-the-canal (ITC) hearing aids (including type CSI12 with FCC ID X26CSI12, IC number 6941C-CSI12 models) with size 312 battery, are available in the following variants:

AM7ITC-DW-LP
AM7ITC-DWT-MP
AM7ITC-DWT-HP
AM7ITC-DWT-UP

In-the-ear (ITE) hearing aids (including type CSI13 with FCC ID X26CSI13, IC number 6941C-CSI13 models) with size 13 battery, are available in the following variants:

AM7ITE-DWT-MP
AM7ITE-DWT-HP

AM7ITE-DWT-UP

Nominal RF output power transmitted is :

CSI12: + 1.36 dBm - **CSI13**: + 1.36 dBm - **CSX10**: + 2.5 dBm.

Additional information

Technical specifications

Hearing aid model	Maximum output (Data in accordance with IEC60118-0 Edition 3.0 2015-06, IEC60118-7 and ANSI S3.22-2009, supply Voltage 1.3V)
All Low Power (LP) models	114 dB SPL (typical)
All Medium Power (MP) models	118 dB SPL (typical)
All High Power (HP) models	120 dB SPL (typical)
All Ultra Power (UP) models	129 dB SPL (typical); 128 dB SPL (typical)*

* For wireless CIC-models.

Acknowledgments

Portions of this software are written by Kenneth MacKay (micro-ec) and licensed under the following terms and conditions:

Copyright © 2014, Kenneth MacKay. All rights reserved.

Redistribution and use in source and binary forms, with or without modification, are permitted provided that the following conditions are met:

- Redistributions of source code must retain the above copyright notice, this list of conditions and the following disclaimer.
- Redistributions in binary form must reproduce the above copyright notice, this list of conditions and the following disclaimer in the documentation and/or other materials provided with the distribution.

THIS SOFTWARE IS PROVIDED BY THE COPYRIGHT HOLDERS AND CONTRIBUTORS "AS IS" AND ANY EXPRESS OR IMPLIED WARRANTIES, INCLUDING, BUT NOT LIMITED TO, THE IMPLIED WARRANTIES OF MERCHANTABILITY AND FITNESS FOR A PARTICULAR PURPOSE ARE DISCLAIMED. IN NO EVENT SHALL THE COPYRIGHT HOLDER OR CONTRIBUTORS BE LIABLE FOR ANY DIRECT, INDIRECT, INCIDENTAL, SPECIAL, EXEMPLARY, OR CONSEQUENTIAL DAMAGES (INCLUDING, BUT NOT LIMITED TO, PROCUREMENT OF SUBSTITUTE GOODS OR SERVICES; LOSS OF USE, DATA, OR PROFITS; OR BUSINESS INTERRUPTION) HOWEVER CAUSED AND ON ANY THEORY OF LIABILITY, WHETHER IN CONTRACT, STRICT LIABILITY, OR

TORT (INCLUDING NEGLIGENCE OR OTHERWISE) ARISING IN ANY WAY OUT OF THE USE OF THIS SOFTWARE, EVEN IF ADVISED OF THE POSSIBILITY OF SUCH DAMAGE.



Use of the Made for Apple badge means that an accessory has been designed to connect specifically to iPhone, iPad and iPod touch models, and has been certified by the developer to meet Apple performance standards. Apple is not responsible for the operation of this device or its compliance with safety and regulatory standards.

© 2021 GN Hearing A/S. All rights reserved. Apple, the Apple logo, iPhone, iPad, iPod touch are trademarks of Apple Inc., registered in the U.S. and other countries. App Store is a service mark of Apple Inc., registered in the US and other countries. Android, Google Play and the Google Play logo are trademarks of Google LLC. The Bluetooth word mark and logos are registered trademarks owned by Bluetooth SIG, Inc.



Complies with
IMDA Standards
DA105282

Manufacturer according to EU Medical
Device Directive 93/42/EEC:

GN Hearing A/S

Lautrupbjerg 7
DK-2750 Ballerup
Denmark
Tel.: +45 4575 1111
gnhearing.com

CVR no. 55082715

United Kingdom

GN Hearing UK Ltd.
Unit 13 Talisman Business Centre
Bicester
OX26 6HR
United Kingdom
Tel: +44 1869352800
resound.comcom



Any issues relating to the EU Medical Device Directive 93/42/EEC or EU Radio Equipment Directive 2014/53/EU should be directed to GN Hearing A/S.